

**THEATER FREIBURG**  
**KLEINES HAUS**  
scale 1:100  
237 seats with Video FOH  
or 248 seats

THEATER FREIBURG

KLEINES HAUS

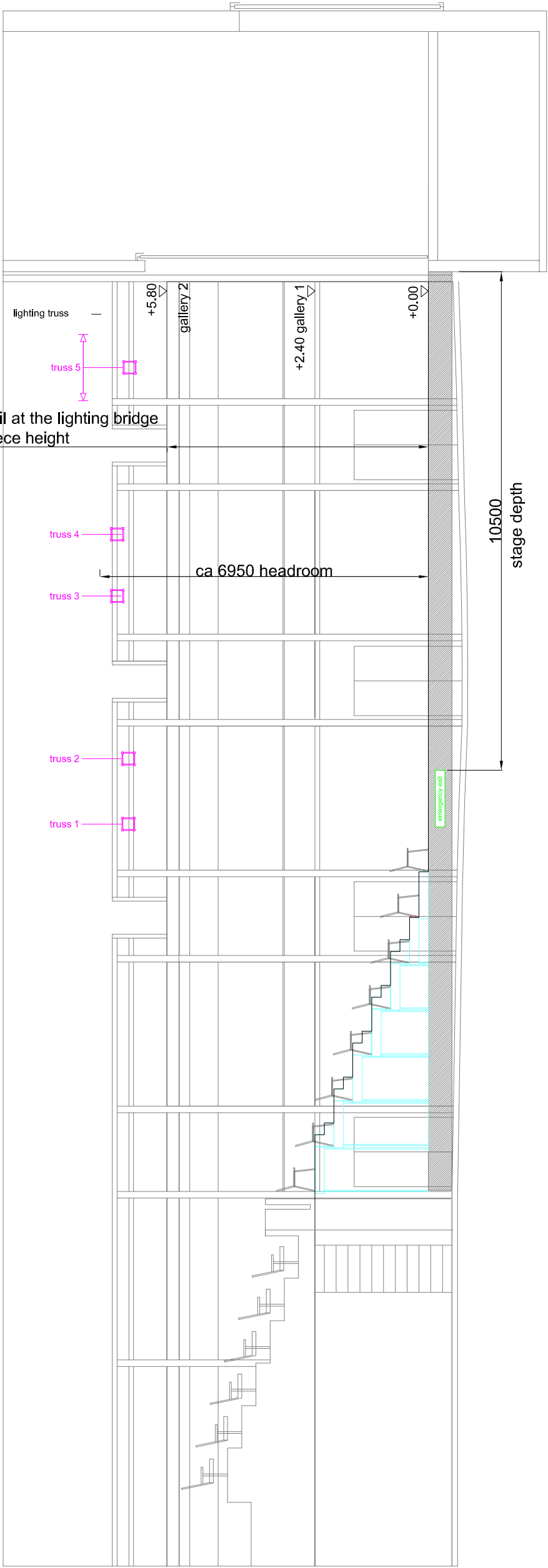
scale 1:100 section

237 seats with Video FOH

or 248 seats

01.04.2024

5450 lower edge of curtain rail at the lighting bridge  
5000 max. set piece height



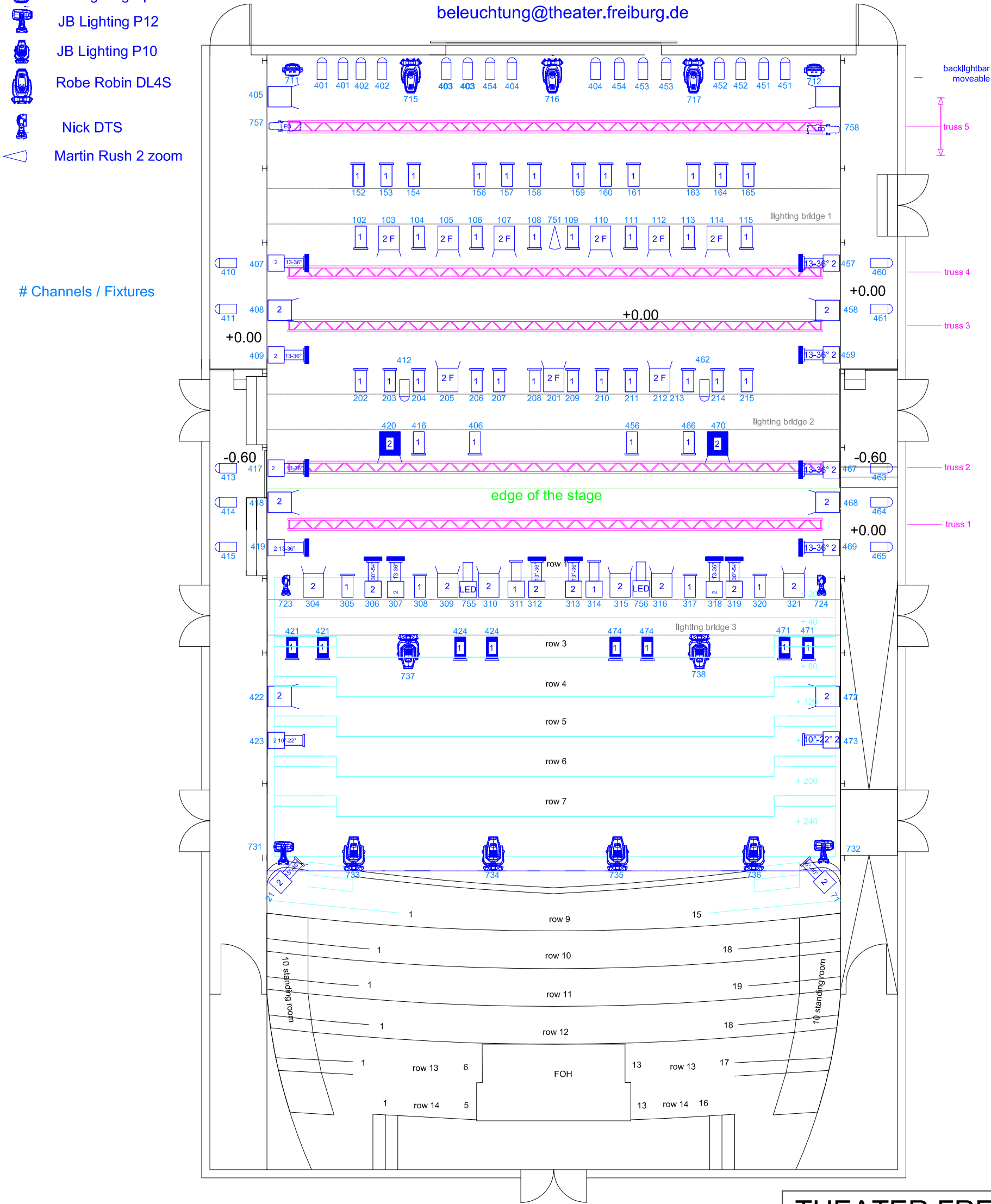
legend:

- PAR 64
- 1 kW PC
- ETC S4 LED Series 2 Lustr. 25°-50°
- ETC Color Sorce Spot jr
- 1kW profile spot
- 750W Source four zoom 25°-50°
- 2 kW profile spot 10°-22°
- 2 kW profile spot 13°-36° with colour changer
- 2 kW profile spot 30°-54° with colour changer
- JB Lighting Sparx 18
- JB Lighting P12
- JB Lighting P10
- Robe Robin DL4S
- Nick DTS
- Martin Rush 2 zoom

- Audience lights
- 2 kW PC / Fresnel

- lighting desk in booth, located above balcony
- backlightbar moveable
- mobile spotlights on request
- GrandMA2 Fullsize, Light and OnPC with Commandwing
- fixed units for sidelights: 6x Par64 each side on 2 levels
- stage size: 14m x 10m

**THEATER FREIBURG**  
lighting KLEINES HAUS  
0761 201 2870  
beleuchtung@theater.freiburg.de



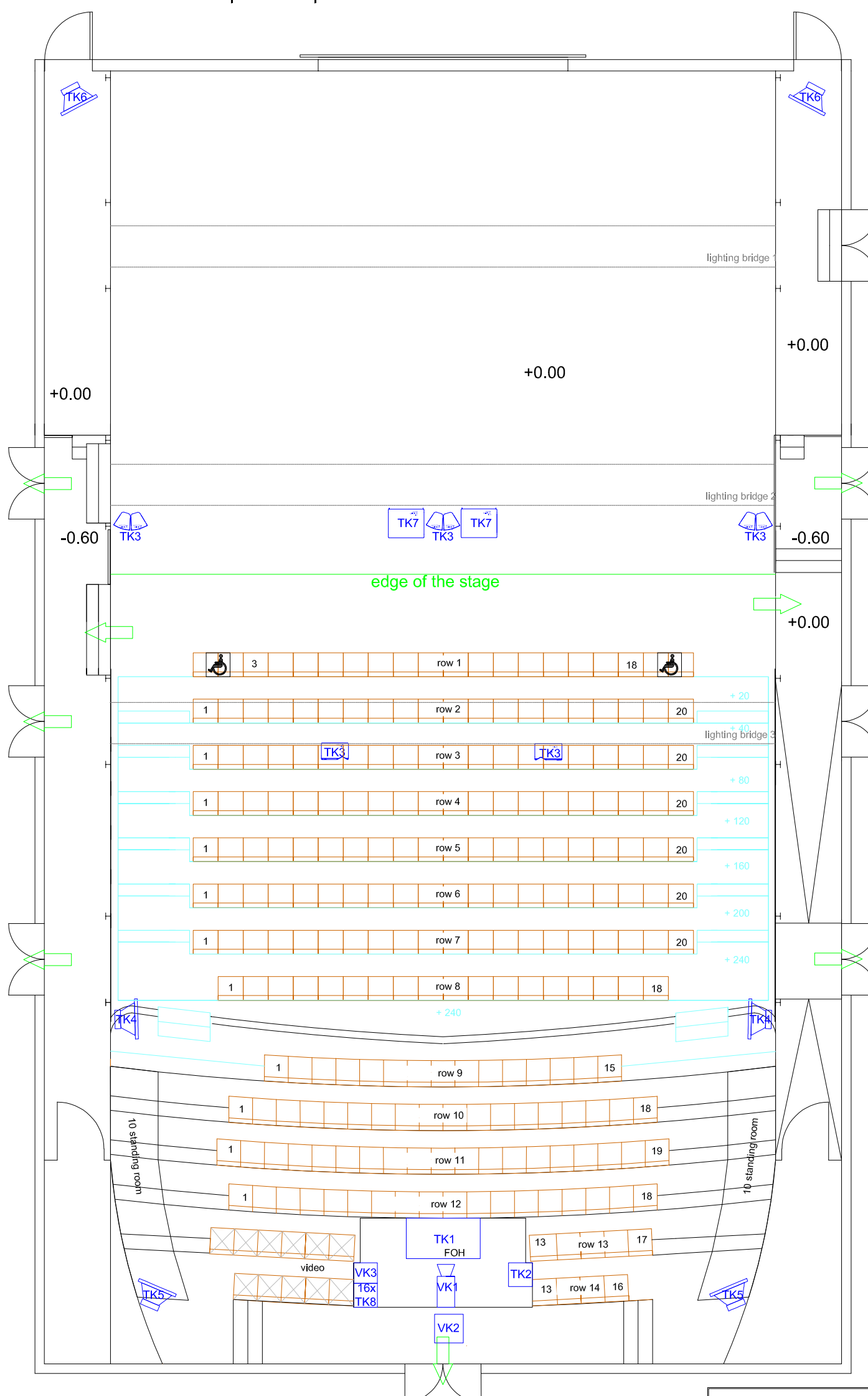
**THEATER FREIBURG**  
KLEINES HAUS  
M 1:100

**Kleines Haus**  
sound and video  
Tel: +49 (0) 761 201 2831

sound equipment/function	amount	symbol
mixer Yamaha Rivage PM7	1	TK1
player Ableton LIVE 10	1	TK2
L'Acoustics A10	8	TK3
L'Acoustics X8	2	TK4
L'Acoustics X12	2	TK5
L'Acoustics X12 + SB15	2	TK6
L'Acoustics SB21	2	TK7
microports Sennheiser SK/EM 2000	16	TK8

video equipment/ function	amount	symbol
stage-cam remote controlled	1	VK1
projector Epson EB-Z9750U, 1920x1200, 7.500 ANSI-Lumen with lens ELPLS04, Ratio 1.63 - 2.65:1	1	VK2
player Q-Lab via Mac	1	VK3

date: 04.02.2021



THEATER FREIBURG  
KLEINES HAUS  
scale 1:100  
237 seats with Video FOH  
or 248 seats

29.04.2024

# THEATER FREIBURG

Stand: 15.05.2024

## Technical Direction

### Kleines Haus

#### 1. Technical Information

Set piece length	max. 13.80 m total length (otherwise no possibility of setup)
Set piece height	max. 5m lights hang under the bridge,
wall width	max. 170cm
Emergency Exit	Please speak with the Technical Director regarding necessary walkways
Loading Door	The door to the loading dock can be opened for a short period of time ( 3 minutes ) Afterwards, it must be immediately closed.
Loading Dock	Cannot be used as a part of the set design, it is used for storage.
5 Four-Point-Truss	Movable over stage area. Pure assembly truss. Cannot be moved scenically. Max. load capacity 400 kg.
Left and right gallery	The lower galleries (+240 cm) are scenically useable The upper galleries and lighting bridges need to be kept clear due to technical use. Technical people only.

## 2. General:

- \* all set pieces must be flame retardant
- \* all fire effects must be discussed with the Technical Director
- \* the standard step for stairs and platform is 20 cm (not 16 2/3 cm)
- \* weapons, gunfire, fire effects, smoking and pyrotechnics must be discussed with the Technical Director

## 3. staff Kleines Haus

**Stagetechnik:** 3 layer operation ( early, late and shared shifts )

1 head of stage

stage technicians: 5 full time/ 2 half time

Edgar Bieber 0761 201 2863 edgar.bieber@theater.freiburg.de

**Lighting:** 3 layer operation ( early, late and shared shifts )

1 head of lights

3 light technicians

Dorothee Hoff 0761 201 2870 beleuchtung@theater.freiburg.de

Michael Philipp 0761 201 2870 beleuchtung@theater.freiburg.de

**Sound:** for Großes and Kleines Haus. 1 head of sound/video and 6 sound technicians

Our sound department is responsible for video projection technology

Jonas Gottschall +49 (0) 761 201 2831 jonas.gottschall@theater.freiburg.de

**Armourer:** for all 3 venues (1 person), responsible for pyrotechnics and weapons  
no rehearsal management

Raphael Weber +49 (0) 761 201 2964 raphael.weber@theater.freiburg.de

**Props:** 2 layer operation, 3 people, rehearsal work sometimes possible

Eva Haberlandt, +49 (0)761 201 2894 eva.haberlandt@theater.freiburg.de

**Costume department:** two wardrobes with space for 5 people

Anna Tiranova 0761 201 2880 anna.tiranova@theater.freiburg.de

**Make-up:** 2 make-up places

Elke Leetz 0761 201 2890 elke.leetz@theater.freiburg.de

Regular rehearsal attendance cannot be guaranteed.

Therefore it is important to have regular meetings with the head of stage,  
as only he can manage the work load for the stage technicians.

Rehearsal set changes can only be made one hour before a performance.

During a performance, the stage technicians are not simultaneously available for  
rehearsal set changes.